



### The goals of Beacon Health Options and the HealthChoices programs are:

- To improve access to health care services for Medical Assistance (MA) recipients
- To improve the quality of care available to MA recipients
- To stabilize Pennsylvania’s MA spending

### Beacon’s Pennsylvania Engagement Center houses a full continuum of departments:

- Member Services
- Network Management
- Provider Relations
- Prevention, Education and Outreach
- Clinical/Utilization Management
- Quality Management
- Claims Processing
- Special Investigation Unit
- Finance



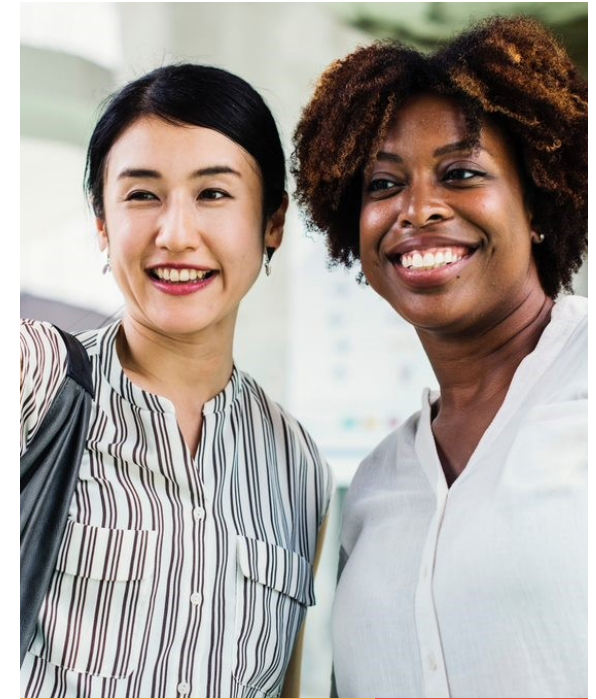
### Questions?

Beacon Providers, please call our toll-free Provider Line at 1-877-615-8503.

HealthChoices members, please contact your county’s toll-free number listed below and a Beacon Member Service Representative will be happy to assist you. Phones are answered 24 hours a day, 7 days a week.

Armstrong County	1-877-688-5969
Beaver County	1-877-688-5970
Butler County	1-877-688-5971
Crawford County	1-866-404-4561
Fayette County	1-877-688-5972
Greene County	1-877-688-5973
Indiana County	1-877-688-5969
Lawrence County	1-877-688-5975
Mercer County	1-866-404-4561
Venango County	1-866-404-4561
Washington County	1-877-688-5976
Westmoreland County	1-877-688-5977
PA Relay (hearing impaired)	711

Beacon Health Options  
P.O. Box 1840  
Cranberry Township, PA 16066  
pa.beaconhealthoptions.com



## ABOUT US

Visit our website:  
[pa.beaconhealthoptions.com](http://pa.beaconhealthoptions.com)



# ABOUT US

- Beacon Health Options is the Managed Care Organization (insurance company) that oversees the behavioral health services for HealthChoices members living in Armstrong, Beaver, Butler, Crawford, Fayette, Greene, Indiana, Lawrence, Mercer, Venango, Washington and Westmoreland counties.
- Beacon manages and covers mental health and substance use services to approximately 300,000 Medical Assistance (MA) recipients in 12 Western Pennsylvania counties. These services are listed in this brochure.
- Beacon assists HealthChoices members with referrals to network providers.
- Beacon authorizes payment to the provider for appropriate behavioral health services as determined by state-approved medical necessity criteria.
- Beacon monitors the quality of services provided and member satisfaction.

## OUR MISSION & VALUES

The mission, vision and values of Beacon are the foundation of how we serve our clients, providers and members, of how we treat each other and operate as a company. These statements support our belief that good health starts with emotional well-being and that, by embracing them, we can help people live their lives to the fullest.

### Mission

We help people live their lives to the fullest potential.

### Values

**Integrity** • We earn trust • **Dignity** • We respect others  
**Community** • We thrive together • **Resiliency** • We overcome adversity • **Ingenuity** • We prove ourselves •  
**Advocacy** • We lead with purpose.



We help people live their lives to the fullest potential.

## HEALTHCHOICES STATE PLAN BEHAVIORAL HEALTH SERVICES

### Mental Health

- Inpatient Psychiatric
- Residential Treatment for Children/Adolescents (RTF)
- Mental Health Partial Hospitalization
- Mental Health Outpatient Services
- Intensive Behavioral Health Services (IBHS)
- Family Based Mental Health Services
- Case Management Services, Intensive Case Management Services, Resource Coordination
- Crisis Intervention
- Clozapine Support Services
- Laboratory Services
- Peer Support Services

### Substance Use

- Hospital Based Detoxification
- Hospital Based Rehabilitation
- Non-Hospital Detoxification
- Non-Hospital Rehabilitation
- Halfway House
- Drug & Alcohol Outpatient Services
- Methadone Maintenance



Beacon Health Options does not discriminate against members based on race, sex, religion, national origin, disability, age, sexual orientation, gender identity, or any other basis prohibited by law.

If you speak a language other than English, this written information is available to you in your language, at no cost. Call your county's toll-free number. You can click the link and choose your county for your toll-free number: <https://pa.beaconhealthoptions.com/beacon-counties/>